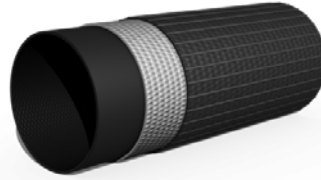




FLEXIGOM®



Performance

- Excellent resistance to abrasion and intensive use by professionals.
- Highly resistant to oil, gasoline and a wide range of chemicals.
- Very resistant to both contact and radiant heat.
- Light and flexible hose even at low temperatures (-15°C). Easy to handle and roll up.
- Highly resistant to breakage thanks to the specially-made textile.
- No maintenance or drying necessary.

Uses

- Industry.
- Agriculture.
- Water transfer, bypass.
- Coating of cables and other piping.
- Compressed air applications.
- Pump exitway.
- Construction and civil works.
- Ships and supplies.

Construction

Interior and exterior layer:

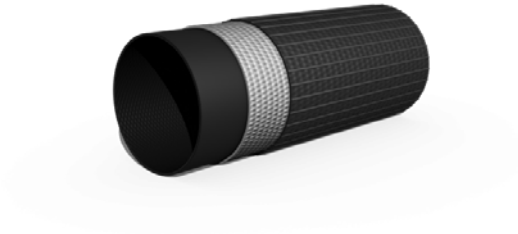
Specially-formulated black nitrile rubber, extruded through the circular fabric. Minimal flow loss thanks to its smooth interior wall. Outer grooves to improve resistance to abrasion and ease of use.

Reinforced middle textile:

Circular weaved outer layer made from high tenacity polyester thread. No defects (broken threads, knots, etc.)



FLEXIGOM®



Technical characteristics

DIAMETER		WEIGHT	THICKNESS	WORKING PRESSURE	BREAKAGE PRESSURE
INCHES	MM.	GR/M.	MM.	BARS	BARS
3/4"	20	230	2,20	30	>90
7/8"	22	240	2,20	30	>90
1"	25	250	1,95	30	>90
1 ^{1/4} "	32	310	2,00	27	>80
1 ^{1/2} "	38	345	1,95	21	>62
1 ^{2/3} "	42	395	2,10	20	>60
1 ^{3/4} "	45	410	1,90	21	>62
2"	52	460	2,00	20	>60
2 ^{1/6} "	55	470	2,00	17	>52
2 ^{1/2} "	64	600	2,10	17	>52
2 ^{3/4} "	70	680	2,30	17	>50
3"	75	790	2,50	17	>50
3 ^{1/4} "	80	810	2,25	15	>45
3 ^{1/2} "	90	930	2,35	15	>45
4"	102	1.030	2,50	17	>52
4 ^{1/3} "	110	1.160	2,40	15	>45
4 ^{1/2} "	115	1.180	2,40	10	>30
5"	125	1.400	2,70	15	>45
6"	152	1.650	2,60	14	>42
8"	204	3.100	3,80	14	>42
10"	254	4.000	3,90	10	>30
12"	304	4.700	3,90	8	>25